



ISSN 2320-3862
JMPS 2015; 3(6): 118-123
© 2015 JMPS
Received: 26-09-2015
Accepted: 29-10-2015

Parul
Junior Lecturer, Shri Baba
Mastnath Public Sr. Sec. School,
Rohtak.



Human endocrine system: A secreting organ or structure

Parul

Abstract

The endocrine system and the changes of adolescence are two portions of the Core Knowledge study of the human body. We have combined the two as one mini-unit within the general topic of The Human Body, and have chosen to introduce the Endocrine System prior to Adolescent Changes in an attempt to make the latter information more valid and understandable for students.

Keywords: endocrine system, secreting organ, adolescence

Introduction

Simply put, endocrinology is the study of endocrine glands. Endocrine glands are a group of glands in the body which secrete hormones. The purpose of the secreted hormones is to cause a specific response in other cells of the body which are located far away. As shown in the picture, the hormones are secreted out of the cells of an endocrine gland into the blood stream giving them access to all other cells of the body.

A great example of how hormones work is shown in our 5 minute video animation showing how a parathyroid gland grows into a tumor that secretes parathyroid hormone which then circulates through the blood stream to cause lots of problems throughout the body. Remember, the definition of a hormone is a molecule that is secreted by one cell which has an effect on another cell some distance away.

Types of Glands

Exocrine Gland

Exocrine glands are glands that produce and secrete substances onto an epithelial surface by way of a duct. Examples of exocrine glands include sweat, salivary, mammary, ceruminous, lacrimal, sebaceous, and mucous. Exocrine glands are one of two types of glands in the human body, the other being endocrine glands, which secrete their products directly into the bloodstream. The liver and pancreas are both exocrine and endocrine glands; they are exocrine glands because they secrete products—bile and pancreatic juice—into the gastrointestinal tract through a series of ducts, and endocrine because they secrete other substances directly into the bloodstream.

Endocrine Glands

Endocrine glands are glands of the endocrine system that secrete their products, *hormones*, directly into the blood rather than through a duct. The major glands of the endocrine system include the pineal gland, pituitary gland, pancreas, ovaries, testes, thyroid gland, parathyroid gland, hypothalamus and adrenal glands. The hypothalamus and pituitary gland are neuroendocrine organs. Local chemical messengers, not generally considered part of the endocrine system, include autocrines, which act on the cells that secrete them, and paracrines, which act on a different cell type nearby.

The ability of a target cell to respond to a hormone depends on the presence of receptors, within the cell or on its plasma membrane, to which the hormone can bind.

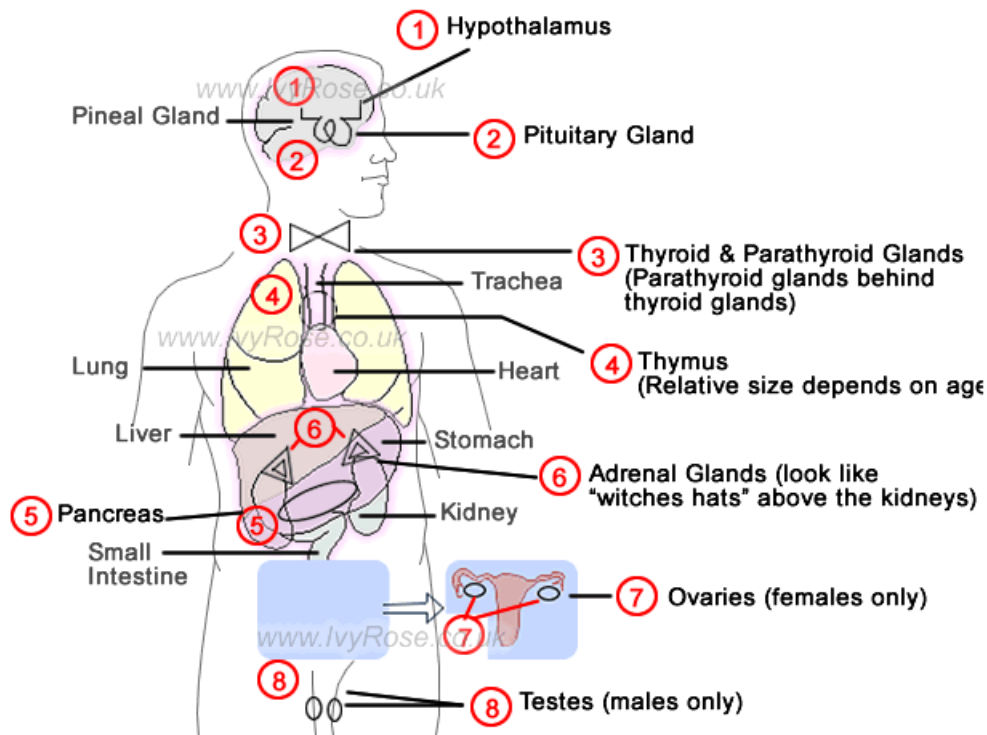
Hormone receptors are dynamic structures. Changes in number and sensitivity of hormone receptors may occur in response to high or low levels of stimulating hormones.

Blood levels of hormones reflect a balance between secretion and degradation/excretion. The liver and kidneys are the major organs that degrade hormones; breakdown products are excreted in urine and feces. Hormone half-life and duration of activity are limited and vary from hormone to hormone.

Correspondence

Parul
Junior Lecturer, Shri Baba
Mastnath Public Sr. Sec. School,
Rohtak.

Location of Glands



The secretory organs that make up the human endocrine system, such as the anterior pituitary gland, the adrenal glands, and the pancreas, synthesize and secrete specific hormones. In addition, many endocrine glands, such as the thyroid gland, ovaries, and testes, are discrete, readily recognizable organs

with defined borders and endocrine functions. Other glands are embedded within structures; for example, the islets of Langerhans are embedded within the pancreas and may be seen clearly only under the microscope.

Glands and hormones of the human endocrine system

Gland or Tissue	Principal Hormone	Function
Testis	Testosterone	stimulates development of male sex organs and secondary sex characteristics, including facial hair growth and increased muscle mass
Ovary	Estrogens (Estradiol, Estrone, Estriol)	stimulate development of female sex organs and secondary sex characteristics, maturation of ovarian follicles, formation and maintenance of bone tissue, and contraction of the uterine muscles
	Inhibin (Folliculostin)	inhibits secretion of follicle-stimulating hormone from the pituitary gland
	Progesterone	stimulates secretion of substances from the lining of the uterus (endometrium) in preparation for egg implantation in the uterine wall induces relaxation of pubic ligaments during childbirth to facilitate infant delivery
Thyroid Gland	Thyroxine	stimulates cellular metabolism, lipid production, carbohydrate utilization, and central and autonomic nervous system activation
	Triiodothyronine	stimulates cellular metabolism, lipid production, carbohydrate utilization, and central and autonomic nervous system activation
Adrenal Gland, Medulla	Epinephrine (Adrenaline)	stimulates "fight or flight" response, increases heart rate, dilates blood vessels in skeletal muscles and liver, increases oxygen delivery to muscle and brain tissues, increases blood glucose concentrations, and suppresses digestion
	Norepinephrine (Noradrenaline)	stimulates "fight or flight" response, increases heart rate, constricts blood vessels, increases blood glucose concentrations, and suppresses digestion
Adrenal Gland, Cortex	Cortisol	activates physiological stress responses to maintain blood glucose concentrations, augments constriction of blood vessels to maintain blood pressure, and stimulates anti-inflammatory pathways
	Aldosterone	regulates balance of salt and water in the body
	Androgens	contribute to growth and development of the male reproductive system and serve as precursors to testosterone and estrogen
Pituitary Gland, Anterior Lobe	corticotropin (adrenocorticotropin, ACTH)	stimulates growth and secretion of cells of the adrenal cortex; increases skin pigmentation
	growth hormone (GH; somatotropin)	stimulates growth of essentially all tissues in the body
	thyrotropin (thyroid-stimulating hormone)	stimulates secretion of thyroid hormone and growth of thyroid cells
	follicle-stimulating hormone (FSH)	stimulates maturation of egg follicles in females and development of

		spermatozoa in males
	luteinizing hormone (LH; interstitial cell stimulating hormone, ICSH)	stimulates rupture of mature egg follicles and production of progesterone and androgens in females and secretion of androgens in males
	prolactin (PRL; luteotropic hormone, LTH; lactogenic hormone; mammotropin)	stimulates and maintains lactation in breast-feeding mothers
Pituitary Gland, Posterior Lobe	oxytocin	stimulates milk ejection during breast-feeding and uterine muscle contraction during childbirth
	vasopressin (antidiuretic hormone, ADH)	regulates fluid volume by increasing or decreasing fluid excretion in response to changes in blood pressure
Pituitary Gland, Intermediate Lobe	melanocyte-stimulating hormones (MSH)*	stimulate melanin synthesis in skin cells to increase skin pigmentation; may also suppress appetite
Hypothalamus	corticotropin-releasing hormone (CRH)	stimulates synthesis and secretion of corticotropin from the anterior pituitary gland
	growth hormone-releasing hormone (GHRH)	stimulates synthesis and secretion of growth hormone from the anterior pituitary gland
	thyrotropin-releasing hormone (TRH)	stimulates and regulates secretion of thyrotropin from the anterior pituitary gland and may modulate neuronal activity in the brain and spinal cord
	gonadotropin-releasing hormone (GnRH)	stimulates synthesis and secretion of follicle-stimulating hormone and luteinizing hormone from the anterior pituitary gland
	prolactin-inhibiting factor (PIF; dopamine)	inhibits secretion of prolactin from the anterior pituitary gland
	somatostatin	inhibits secretion of growth hormone from the anterior pituitary gland, inhibits secretion of insulin and glucagon in the pancreas, and inhibits secretion of gastrointestinal hormones and secretion of acid in the stomach
	gastrointestinal neuropeptides	hormones secreted from the stomach and pancreas that stimulate hypothalamic secretion of neuropeptides, such as neuropeptide Y, gastrin-releasing peptide, and somatostatin, that regulate appetite, fat storage, and metabolism
Pancreatic Islets of Langerhans	glucagon	maintains blood glucose concentrations by stimulating release of glucose from the liver and production of glucose from amino acids and glycerol
	insulin	stimulates glucose uptake and storage in adipose, muscle, and liver tissues
	somatostatin	inhibits glucagon and insulin secretion from the pancreas and inhibits secretion of gastrointestinal hormones and secretion of acid in the stomach
	pancreatic polypeptide	inhibits contraction of the gallbladder and secretion of exocrine substances from the pancreas
Parathyroid Gland	parathyroid hormone (parathormone)	increases serum calcium concentrations by stimulating release of calcium from bone tissue, reabsorption of calcium in the kidneys, and production of vitamin D in the kidneys; inhibits reabsorption of phosphate in the kidneys
	calcitonin	decreases serum calcium concentrations by promoting uptake of calcium into bone tissue and excretion of calcium in the urine
Skin, Liver, Kidneys	calciferols (vitamin D)	maintain serum calcium concentrations by increasing absorption of calcium and phosphate in the intestines and reabsorption of calcium and phosphate in the kidneys; mobilizes calcium from bone in response to parathyroid hormone activity
Stomach	gastrin	stimulates secretion of acid and pepsin in the stomach and contraction of the pyloric region of the stomach near the small intestine to increase motility during digestion
Duodenum	cholecystokinin (CCK; pancreozymin)	stimulates release of bile from the gallbladder into the intestine and stimulates secretion of pancreatic juices into the intestine; may induce satiety
	secretin	stimulates secretion of water and bicarbonate from the pancreas into the duodenum; inhibits secretion of gastrin in the stomach, delaying gastric emptying
	gastric-inhibitory polypeptide (GIP)	inhibits secretion of acid into the stomach; stimulates secretion of insulin from the pancreas
	vasoactive intestinal peptide (VIP)	stimulates dilation of blood vessels and secretion of water and electrolytes from the intestine; modulates immune functions
Pineal Gland	melatonin	regulates circadian rhythm (primarily in response to light and dark cycles) and release of gonadotropin-releasing hormone from the hypothalamus and gonadotropins from the pituitary gland
Kidneys	renin	regulates blood pressure and blood flow by catalyzing conversion of angiotensinogen to angiotensin I in the kidneys
Multiple Tissues	insulin-like growth factors (somatomedins)	stimulate growth by mediating secretion of growth hormone from the pituitary gland
	prostaglandins	regulate many physiological processes, including dilation and constriction of blood vessels, aggregation of platelets, and inflammation

Hormones can be chemically classified into four groups:

- **Amino acid-derived:** Hormones that are modified amino acids.
- **Polypeptide and proteins:** Hormones that are chains of

amino acids of less than or more than about 100 amino acids, respectively. Some protein hormones are actually glycoproteins, containing glucose or other carbohydrate groups.

- **Steroids:** Hormones that are lipids synthesized from cholesterol. Steroids are characterized by four interlocking carbohydrate rings.
- **Eicosanoids:** Are lipids synthesized from the fatty acid chains of phospholipids found in plasma membrane.

Hormones circulating in the blood diffuse into the interstitial fluids surrounding the cell. Cells with specific receptors for a hormone respond with an action that is appropriate for the cell. Because of the specificity of hormone and target cell, the effects produced by a single hormone may vary among different kinds of target cells.

Hormones activate target cells by one of two methods, depending upon the chemical nature of the hormone.

Lipid-soluble hormones (steroid hormones and hormones of the thyroid gland) diffuse through the cell membranes of target cells. The lipid-soluble hormone then binds to a receptor protein that, in turn, activates a DNA segment that turns on specific genes. The proteins produced as result of the transcription of the genes and subsequent translation of mRNA act as enzymes that regulate specific physiological cell activity.

Water-soluble hormones (polypeptide, protein, and most amino acid hormones) bind to a receptor protein on the plasma membrane of the cell.

Cyclic AMP (CAMP) is produced when the receptor protein activates another membrane-bound protein called a G protein. The G protein activates adenylate cyclase, the enzyme that catalyzes the production of CAMP from ATP. Cyclic AMP then triggers an enzyme that generates specific cellular changes.

Inositol triphosphate (IP3) is produced from membrane phospholipids. IP3, in turn, triggers the release of Ca^{2+} from the endoplasmic reticulum, which then activates enzymes that generate cellular changes.

Endocrine glands release hormones in response to one or more of the following stimuli:

- Hormones from other endocrine glands.
- Chemical characteristics of the blood (other than hormones).
- Neural stimulation.

Most hormone production is managed by a negative feedback system. The nervous system and certain endocrine tissues monitor various internal conditions of the body. If action is required to maintain homeostasis, hormones are released, either directly by an endocrine gland or indirectly through the action of the hypothalamus of the brain, which stimulates other endocrine glands to release hormones. The hormones activate target cells, which initiate physiological changes that adjust the body conditions. When normal conditions have been recovered, the corrective action - the production of hormones - is discontinued. Thus, in negative feedback, when the original (abnormal) condition has been repaired, or negated, corrective actions decrease or discontinue. For example, the amount of glucose in the blood controls the secretion of insulin and glucagons via negative feedback.

The production of some hormones is controlled by positive feedback. In such a system, hormones cause a condition to intensify, rather than decrease. As the condition intensifies, hormone production increases. Such positive feedback is uncommon, but does occur during childbirth, where hormone levels build with increasingly intense labor contractions. Also in lactation, hormone levels increase in response to nursing,

which causes an increase in milk production. The hormone produced by the hypothalamus causing the milk let down and uterine contraction is oxytocin.

Glossary

Adrenal Gland: endocrine gland that is located on top of each kidney

Amino Acid-derived: hormones that are modified amino acids

Antagonistic Hormones: hormones that act to return body conditions to within acceptable limits from opposite extremes.

Calcitonin: hormone produced by the thyroid; contributes to the regulation of blood calcium levels.

Eicosanoids: lipids that are synthesized from the fatty acid chains of phospholipids found in plasma membrane.

Endocrine Glands: glands that have no duct and release their secretions directly into the intercellular fluid or into the blood.

Endocrine System: a control system of ductless glands that secrete chemical messengers called hormones.

Estrogen: hormone in females; stimulates the development of the uterus and vagina.

Exocrine Glands: glands that release their cellular secretions through a duct which empties to the outside or into the lumen (empty internal space) of an organ.

Hormone: a specific chemical substance produced by certain cells that control, or help to control, cellular processes elsewhere in an organism.

Insulin: hormone that acts to lower blood sugar levels by allowing the sugar to flow into cells.

Iodine: chemical in the body; Thyroid hormone can not be produced without it.

Lipid-soluble Hormones: diffuse through the cell membranes of target cells.

Parathyroid: four masses of tissue, two embedded posterior in each lateral mass of the thyroid gland.

Pancreas: organ involved with the digestion system and the circulatory system; helps to maintain blood sugar levels.

Pineal Gland: small endocrine gland in the brain located near the center of the brain, between the two hemispheres, tucked in a groove where the two rounded thalamic bodies join.

Pituitary Gland: endocrine gland that is attached to the hypothalamus of the lower forebrain.

Polypeptide and Proteins: hormones that are chains of amino acids of less than or more than about 100 amino acids.

Steroids: hormones that are lipids that are synthesized from cholesterol; characterized by four interlocking carbohydrate rings.

Testosterone: hormone more prominent in males; belongs to the family of androgens, which are steroid hormones producing masculinizing effects.

Thyroid Gland: endocrine gland that consists of two lateral masses that are attached to the trachea.

Thyroxine: serves to stimulate oxidative metabolism in cells; increases the oxygen consumption and heat production of most body tissues.

Water-soluble Hormones: bind to a receptor protein on the plasma membrane of the cell.

References

- Cocchi, M. and Venturi, S. Iodide, antioxidant function and Omega-6 and Omega-3 fatty acids: a new hypothesis of a biochemical cooperation? Progress in Nutrition, 2000, 2, 15-19.
- http://www.ivyroses.com/HumanBody/Endocrine/Endocrine_Glands.php

- https://en.wikipedia.org/wiki/Endocrine_gland.
- https://en.wikipedia.org/wiki/Exocrine_gland.
- http://www.parathyroid.com/endocrine_introduction.html.

References

- Petrovska BB. Historical review of medicinal plants' usage, *Pharmacognosy Reviews* 2012; 6(11):1-5.
- Verma S, Singh SP. Current and future status of herbal medicines, *Veterinary World* 2008; 1(11):347-350.
- Gunjan M, Ravindran M, Jana GK. A Review on Some Potential Traditional Phytomedicine with Antidiabetic Properties. *International Journal of Phytomedicine*. 2011; 3:448-458.
- Umashanker M, Srivastava S. Traditional Indian herbal medicine used as antipyretic, antiulcer, anti-dibetic and anticancer: A review. *International Journal of research in pharmacy and chemistry*. 2011; 1(4):1153-1159.
- Hasler CM, Blumberg JB. Symposium on Phytochemicals: Biochemistry and Physiology, *Journal of Nutrition*. 1999; 129:756S-757S.
- Gibson EL, Wardel J, Watts CJ. Fruit and Vegetable Consumption, Nutritional Knowledge and Beliefs in Mothers and Children *Appetite* 1998; 31:205-228.
- Mathai K. Nutrition in the Adult Years. In Krause's Food, Nutrition, and Diet Therapy, 10th ed., ed. L.K. Mahan and S. Escott-Stump 2000; 271:274-275.
- American Cancer Society. Phytochemicals. Available at http://www.cancer.org/eprise/main/docroot/ETO/content/ETO_5_3X_Phytochemical, 2000.
- Meagher E, Thomson C. Vitamin and Mineral Therapy. In *Medical Nutrition and Disease*, 2nd ed., G Morrison and L Hark, Malden, Massachusetts: Blackwell Science Inc, 1999, 33-58.
- Sharma JP, Srivastava A, Thakur SP, Barpete PK, Singh S. Herbal medicine as antipyretic: A comprehensive review, *International Journal of pharmacy and life sciences*. 2012; 1(1):18-22.
- Saxena M, Saxena J, Nema R, Signgh D, Gupta A. Phytochemistry of Medicinal Plants, *Journal of Pharmacognosy and Phytochemistry*. 2013; 1(6):168-182.
- Costa MA, Zia ZQ, Davin LB, Lewis NG. Chapter Four: Toward Engineering the Metabolic Pathways of Cancer-Preventing Lignans in Cereal Grains and Other Crops. In *Recent Advances in Phytochemistry, Phytochemicals in Human Health Protection, Nutrition, and Plant Defense*, ed. JT Romeo, New York 1999; 33:67-87.
- King A, Young G. Characteristics and Occurrence of Phenolic Phytochemicals, *Journal of the American Dietetic Association*. 1999; 24:213-218.
- Rao N. Bioactive phytochemicals in Indian foods and their potential in health promotion and disease prevention, *Asia Pacific Journal of Clinical Nutrition*. 2003; 12(1):9-22.
- Siddiqui SA, Pandey A, Dwivedi A, Jain S, Misra N. Comparative conformational, structural and vibrational study on the molecular structure of tyrosine and L-DOPA using density functional theory, *Journal of Chemical and Pharmaceutical Research*. 2010; 2(4):835-850.
- Lee BP, Chao C, Nunalee FN, Motan E, Shull KR, Messersmith PB. Rapid Gel formation and adhesion in photocurable and biodegradable Block copolymers with high dopa content 2006; 39:1740-1748.
- Chalmers JP, Baldessarini RJ, Wurtman RJ. Effects of L-Dopa on Norepinephrine Metabolism in the Brain 1971; 68(3):662-666.
- Antony AS, Debroy P, Vadivelan R, Jaysankar K, Vikram M, Nandini S. Amelioration of CNS Toxicities of L-Dopa in Experimental Models of Parkinson's disease by Concurrent Treatment with *Tinospora cordifolia* 2010; 2(1):28-37.
- British Pharmacopoeia. HMSO Publication Centre, London 1980; 1-2(781):254-535.
- The United State Pharmacopoeia. XXI, the US Pharmaceutical Convention Inc., Rockville, 1987, 585-586.
- Parikh KM, Doshi VJ, Sawant SV, Salunkhe UB. Estimation of L-DOPA from plant *Mucuna pruriens* and its formulation *Indian Drugs* 1990; 27:353-356.
- Siddhuraju P, Becker K. Rapid reversed-phase high performance liquid chromatographic method for the quantification of L-Dopa (L-3, 4- dihydroxyphenylalanine), non-methylated and methylated Antony SA, Debroy P, Vadivelan R, Jaysankar K, Vikram M, Nandini S, Sundeeep M, Elango K. tetrahydroisoquinoline compounds from *Mucuna* beans *Food Chemistry* 2001; 72:389-394.
- Kshirsagar VB, Deokate UA, Bharkad VB, Khadabadi SS. HPTLC Method Development and Validation for the simultaneous Estimation of Diosgenin and Levodopa in marketed formulation, *Asian Journal of research chemistry*. 2008; 1(1):36-39.
- Gandhi DB, Mehta PJ. Simultaneous RP-HPTLC Method for Determination of Levodopa, Carbidopa, and Entacapone in Combined Tablet Dosage Form, *Journal of planner chromatography*. 2011; 3:236-241.
- Sheng Y, Chen X. Isolation and identification of an isomer of β -sitosterol by HPLC and GC-MS 2009; 1(3):203-206.
- Piironen V, Lindsay DG, Miettinen TA. Plant sterols: Biosynthesis, biological function and their importance to human nutrition, *J Sci of Food and Agric*. 2000; 80:939-966.
- Ambasta SP. Useful plants of India (National Institute of sciences Communication, CSIR, New Delhi), 1986, 14.
- Pegel KH. The importance of sitosterol and sitosterolin in human and animal nutrition, *South African Journal of Science*. 1997; 93:263-268.
- Shailajan S, Naresh C, Sane RT, Sasikumar M. Effect of *Astera canthalongifolia* Nees. Against CCl₄ induced liver dysfunction in rat, *Indian Journal of Experimental biology*. 2005; 43:68-75.
- Ahmed S, Rahman A, Mathur M, Athar M, Sultana S. Anti-tumor promoting activity of *Astera canthalongifolia* against experimental hepatocarcinogenesis in rats. *Food and Chemical Toxicology*, 39, 19-28.
- Ali MA. Chemical investigation on the seeds of *Hygrophilaspinoso*, *Pakistan Journal of Industrial research*. 1967; 10:82-83.
- Bouc PJD, Etsebeth RW, Liebenberg Albrecht CF, Pegel K. Van Jaarsveld PP. The effect of Beta-sitosterol and beta-sitosterolglucoside stimulate human peripheral blood lymphocyte proliferation: Implications for their use as an immunomodulatory vitamin combination, *International Journal of Immunopharmacology*. 1996; 1:693-700.
- Awad AB, Chan KC, Downie AC, Fink CS. Phytosterols as Anticancer Dietary Components: Evidence and Mechanism of Action, *Nutrition and Cancer* 2000; 36:74-78.
- Awad AB, Williams H, Fink CS. Phytosterols reduce in vitro metastatic ability of MDA-MB-231 human breast

- cancer cells. *Nutrition and Cancer*. 2001; 40(2):157-164.
35. Awad AB, Downie A, Fink CS, Kim U. Dietary phytosterol inhibits the growth and metastasis of MDA-MB-231 human breast cancer cells grown in SCID mice, *Anticancer Research* 2000; 20:821-824.
 36. Awad AB, Fink CS. Phytosterols as anticancer dietary components: Evidence and mechanism of action, *Journal of Nutrition* 2000; 130:21-27.
 37. Lembcke J, Ceglarek U, Fiedler GM, Baumann S, Leichtle A, Thiery J. Accumulation of Dietary Cholesterol in Sitosterolemia Caused by Mutations in Adjacent ABC Transporters, *Journal of Lipid Research*. 2005; 46:21-26.
 38. Nair VDP, Kander I, Hoogmartens K. Determination of stigmasterol, β -sitosterol and stigmastanol in oral dosage forms using high performance liquid chromatography with evaporative light scattering detection. *Journal of Pharmaceutical and Biomedical Analysis* 2006; 41(3):731-737.
 39. Kamm W, Dionisi F, Hischenhuber C, Schmarr HG, Engel KH. Rapid detection of vegetable oils in milk by fat by online LC-GC analysis of beta-sitosterol. *European Journal of Lipid Science and Technology*. 2002; 104(11):756-761.
 40. Sorenson WR, Sullivan D. Determination of Campesterol, Stigmasterol, and beta-Sitosterol in Saw Palmetto Raw Materials and Dietary Supplements by Gas Chromatography: Single-Laboratory Validation, *Journal of AOAC International*. 2006; 89(1):22-34.
 41. Kumar RS, Sivakumar T, Sunderam RS, Gupta M, Mazumdar UK, Gomathi P *et al.* antioxidant and antimicrobial activities of bauhinia racemosa L. stem bark. *Brazilian Journal of medical and biological research*. 2005; 38:1015-1024.
 42. Kumar G, Karthik L, Bhaskara Rao KV. Phytochemical composition and in vitro antimicrobial activity of bauhinia racemosa lamk (caesalpinaceae), *International journal of pharmaceutical sciences and research*. 2010; 1(11):51-58.
 43. Borikar VI, Jangde CR, Philip P, Rekhe DS. Study of antiulcer activity of bauhinia racemosa lam in rats, *Veterinary World* 2009; 2(6):215-216.
 44. Nirmal SA, Laware RB, Dhasad VV, Kuchekar BS. Antihistaminic Effect of Bauhinia racemosa Leaves. *Journal of young pharmacists* 2011; 3(2):129-131.
 45. Amoo IA, Moza L. Extraction and physio-chemical properties of oil from Bauhinia racemosa seeds, *La Rivista Haliana Delle Sostanze* 1999; 56:399-400.
 46. Darne P, Mehta M, Dubey P, Prabhune A. Bauhinia seed oil, A novel substrate for sophorolipid production, *World Journal of pharmacy and pharmaceutical sciences*. 2014; 3(11):792-804.
 47. Sharanabasappa GK, Santosh MK, Shaila D, Seetharam YN, Sanjeevrao I. Phytochemical studies on Bauhinia Racemosa Linn. and hardwickia Bina roxb, *E Journal of chemistry*. 2007; 4(1):21-31.
 48. Ekanayake S, Jansz ER, Nair BM, Abeyssekera AM. A review on an underutilized legume Canavalia Gladiata, *Vidyalaya Journal of science*. 1999; 8:1-25.
 49. Laija SN, Mahesh S, Smitha Ls, Remani P. Isolation and partial characterization of two plant lectins, *Current Research Journal of Biological Sciences*. 2010; 2(4):232-237.
 50. Moreira RDA, Corderio EDF, Cavada BS, Nunes ED, Fernandes AG, Oliveira JTA. Plant seed lectins. A possible marker for chemotaxonomy of the genus Canavalia, *R. Bras Fisiol Veg*, 1993, 127-132.
 51. Ekanayake S, Jansz ER, Nair BM. Proximate composition, mineral and amino acid content of mature Canavalia gladiata seeds, *Food Chemistry* 1999; 66(1):115-119.
 52. Leu YL, Hwang TL, Kuo PC, Liou KP, Huang BS, Chen GF. Constituents from vigna vexillata and their anti-inflammatory activity, *International Journal of molecular sciences*. 2012; 13:9754-9768.
 53. Lattanzio V, Cardinali A, Linsalata V, Perrino P, Ng NQ. A chemosystematic study of the flavonoids of Vigna, *Genetic Resources and Crop Evolution* 1996; 43:493-504.
 54. Battu G, Male A, Hari priya T, Malleswari VN, Reeshma SK. A phytopharmacological Review on vigna Species 2011; 2(1):62-67.
 55. Adetula OA, Fatokun CA, Obigbesan G. centromeric banding pattern of mitotic chromosomes in vigna vexillata (TVnu 73), *African Journal of biotechnology*. 2005; 4(5):400-402.
 56. Barnes J. Quality, efficacy and safety of complementary medicines: fashions, facts and the future. Part1: Regulation and quality, *Br Journal of Clinical Pharmacology*. 2003; 55:226-233.
 57. Phillips S, Balge M, Heavy metal toxicity, Texas (SA), New Fields, 2007, 1-30.
 58. Dushenkov V, Kumar PBAN, Motto H, Raskin I. Rhizofiltration: the use of plants to remove heavy metals from aqueous streams, *Environ Science and Technology*. 1995; 29:1239-1245.
 59. Singh V, Garg AN. Availability of essential trace elements in Indian cereals, vegetables and spices using INAA and the contribution of spices to daily dietary intake, *Food Chemistry* 2006; 94(1):81-89.
 60. Sharma DK, Rai S, Arora SS, Gupta PM, Sharma R, Chopra AK. Study of the trace elements in *Aloe vera* L. (*Aloe barbandensis* Miller) viz. Liliaceae and its biological and environmental Importance, *Journal of Chemical and Pharmaceutical Ressearch*. 2011; 3(3):64.
 61. Gomez MR, Cerutti S, Somb LL, Silva MF, Martinez LD. Determination of heavy metals for the quality control in argentinian herbal medicines by ETAAS and ICP-OES. *Food and Chemical Toxicology* 2007; 45(6):1060-1064.
 62. Schilcher H. Possibilities and limitations of phytotherapy. *Pharmaceutical Weekblad* 1987; 9:215.
 63. World health organisation (WHO). Guidelines for the Assessment of Herbal Medicines, Munich, Geneva 1991; 28:6.
 64. Mc Laughlin MJ, Parker DR, Clark JM. Metals and micronutrients-food safety issues, *Field Crops Res* 1999; 60:143-163.
 65. Gracia E, Cabrera C, Lorenzo ML, López MC. Chromium levels in spices and aromatic herbs, *Science of the Total Environment* 2000; 247(1):51-56.
 66. Adeloju SB, Bond AM. Influence of laboratory environment on the precision and accuracy of trace element analysis; *Analytical Chemistry* 1985; 57:1728-1733.
 67. Weiss DJ, Shotyk W, Schafer J, Loyall U, Grollimund E, Gloor M. Microwave digestion of ancient peat and lead determination by voltammetry, *Fresenius Journal of analytical Chemistry*. 1999; 363(3):300-305.
 68. Sun HW, Ying G, Yuan CG, Zhang YX, Yang Li-Ii, Zhang De-q. Determination of trace lead in Chinese herbs by derivative flame atomic absorption spectrometry using an atom trapping technique, *Analytical Science* 2002; 18:325-328.